

Built-In Barbecue Plans



Before you Begin

A masonry barbecue enclosure adds value to your home, and enhances your cooking and entertaining enjoyment. With the variety of materials available, many different barbecue designs are possible, from simple and rustic, to sleek and modern. Any backyard or patio can be improved with a built-in barbecue.

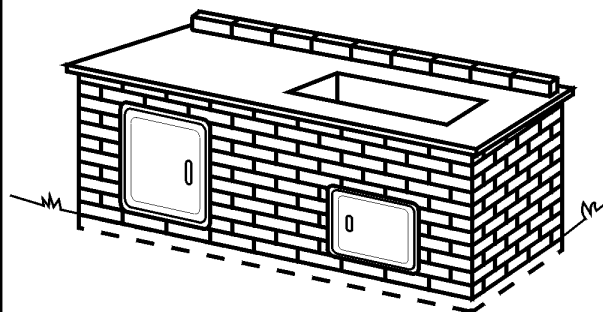
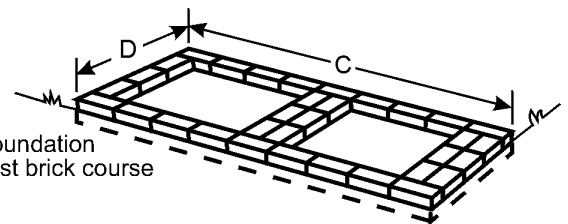
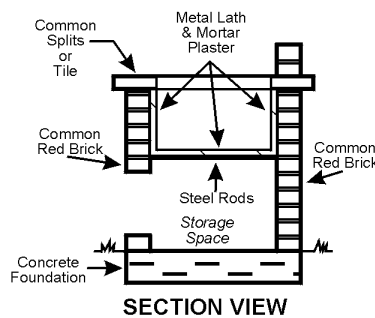
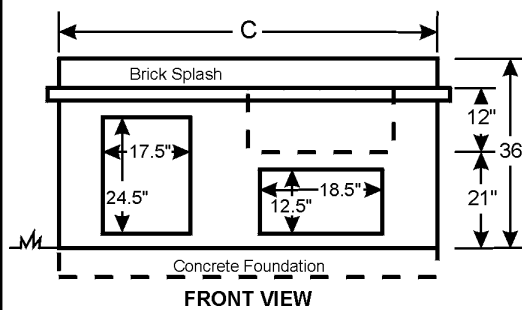
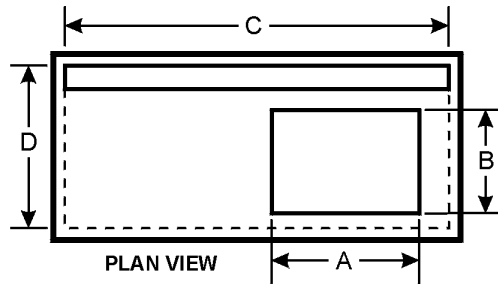
When planning your project, your level of experience in working with masonry is an important consideration. If you do not have experience with masonry, and plan to do part or all of the work yourself, we suggest the following:

1. Obtain a good book on basic masonry.
2. Discuss your project with someone who has masonry experience.
3. Check with your local building inspector concerning building rules and permits.
4. If your plan calls for a fireplace along with your barbecue, check with your fire marshal concerning local fire ordinances.
5. Purchase the barbecue and any accessories **before** beginning your project, and review all installation instructions provided. Costly mistakes can be avoided by following the instructions, and by taking the actual physical measurements of your particular barbecue and its accessories.

Warning: Please **do not** use these plans as the final blueprints for your project. These plans provide **rough** diagrams and **approximate** material estimates, to assist in planning. Due to differences in materials, building codes and other variables, it is not practical to provide complete plans for building a barbecue enclosure. Please re-calculate the dimensions and material estimates to fit your particular project.

Drop-In Barbecue Enclosure

Barbecue Models	A	B	C	D
Drop-In BBQ, Charcoal, 18" x 30" Cooking Area	31½"	21"	76"	34"
Drop-In BBQ, Charcoal, 16" x 23" Cooking Area	24½"	19"	67½"	34"



18" x 30" BBQ Enclosure Materials List

- 1 Drop-In BBQ unit
- 1 Door, 24" x 17"
- 1 Door, 12" x 18"
- 18 Steel Rods, ¼" dia., 31" length
- 450 Common Red Brick, 4" x 8" x 2½"
- 95 Common Splits or Tile, 4" x 8"
- 5 sq. yards Metal Lath for plastering
- 10 sacks Dry-Mix Mortar

16" x 23" BBQ Enclosure Materials List

- 1 Drop-In BBQ unit
- 1 Door, 24" x 17"
- 1 Door, 12" x 18"
- 14 Steel Rods, ¼" dia., 29" length
- 380 Common Red Brick, 4" x 8" x 2½"
- 85 Common Splits or Tile, 4" x 8"
- 4 sq. yards Metal Lath for plastering
- 9 sacks Dry-Mix Mortar

Height-up 11 courses, building in doors and support rods. Line BBQ opening with metal lath and plaster with mortar. Complete by laying common splits or tile counter top and brick splash. Allow 2 weeks to cure.



Built-In Barbecue Plans



Before you Begin

A masonry barbecue enclosure adds value to your home, and enhances your cooking and entertaining enjoyment. With the variety of materials available, many different barbecue designs are possible, from simple and rustic, to sleek and modern. Any backyard or patio can be improved with a built-in barbecue.

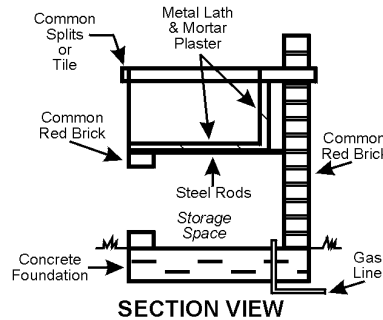
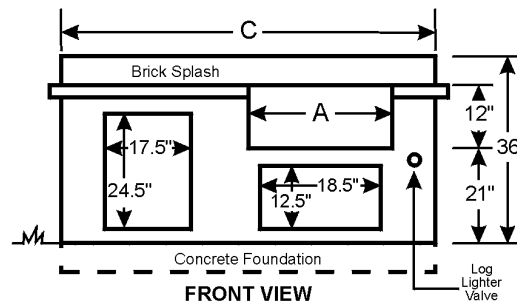
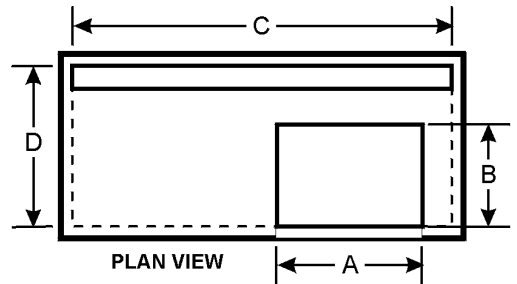
When planning your project, your level of experience in working with masonry is an important consideration. If you do not have experience with masonry, and plan to do part or all of the work yourself, we suggest the following:

1. Obtain a good book on basic masonry.
2. Discuss your project with someone who has masonry experience.
3. Check with your local building inspector concerning building rules and permits.
4. If your plan calls for a fireplace along with your barbecue, check with your fire marshal concerning local fire ordinances.
5. Purchase the barbecue and any accessories **before** beginning your project, and review all installation instructions provided. Costly mistakes can be avoided by following the instructions, and by taking the actual physical measurements of your particular barbecue and its accessories.

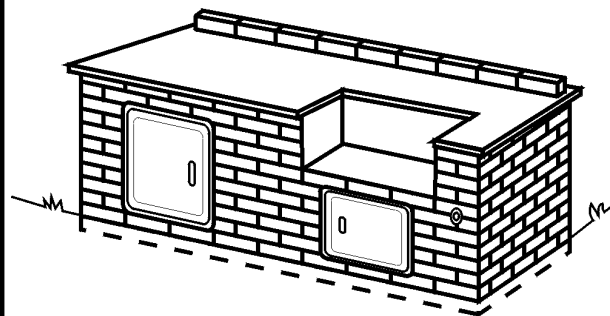
Warning: Please **do not** use these plans as the final blueprints for your project. These plans provide **rough** diagrams and **approximate** material estimates, to assist in planning. Due to differences in materials, building codes and other variables, it is not practical to provide complete plans for building a barbecue enclosure. Please re-calculate the dimensions and material estimates to fit your particular project.

Slide-In Barbecue Enclosure

Barbecue Models	A	B	C	D
Slide-In BBQ, Charcoal or Gas, 18" x 30" Cooking Area	31¼"	20¼"	76"	26½"
Slide-In BBQ, Charcoal or Gas, 16" x 23" Cooking Area	24¾"	18¼"	67½"	25½"



Concrete foundation and first brick course

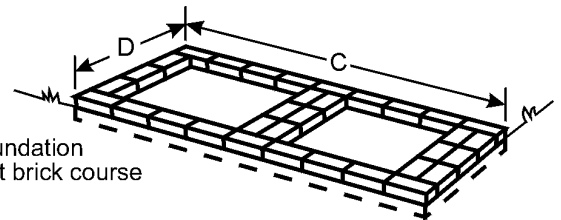


18" x 30" BBQ Enclosure Materials List

- 1 Slide-In BBQ Unit
 - 1 Door, 24" x 17"
 - 1 Door, 12" x 18"
 - 18 Steel Rods, ¼" dia., 22½" length
 - 400 Common Red Brick, 4" x 8" x 2½"
 - 80 Common Splits or Tile, 4" x 8"
 - 4 sq. yards Metal Lath for plastering
 - 8 sacks Dry-Mix Mortar
- For Gas BBQ's:
- 1 Log Lighter Gas Valve
 - As Needed ½" Pipe, for gas inlet

16" x 23" BBQ Enclosure Materials List

- 1 Slide-In BBQ Unit
 - 1 Door, 24" x 17"
 - 1 Door, 12" x 18"
 - 14 Steel Rods, ¼" dia., 21½" length
 - 350 Common Red Brick, 4" x 8" x 2½"
 - 70 Common Splits or Tile, 4" x 8"
 - 3 sq. yards Metal Lath for plastering
 - 8 sacks Dry-Mix Mortar
- For Gas BBQ's:
- 1 Log Lighter Gas Valve
 - As Needed Pipe, ½", for gas inlet



Height-up 11 courses, building in doors and support rods. Line BBQ opening with metal lath and plaster with mortar. Complete by laying common splits or tile counter top and brick splash. Allow 2 weeks to cure.

